

# ÜBERSICHTSZEICHNUNG ASSEMBLY DRAWING

# *GHOST*



**E-TERU ESSENTIAL (MY23)**

**E-TERU ESSENTIAL EQ (MY23)**

**E-TERU ESSENTIAL EQ MID (MY23)**



E-TERU ESSENTIAL (MY23)

date: 29-03-2023

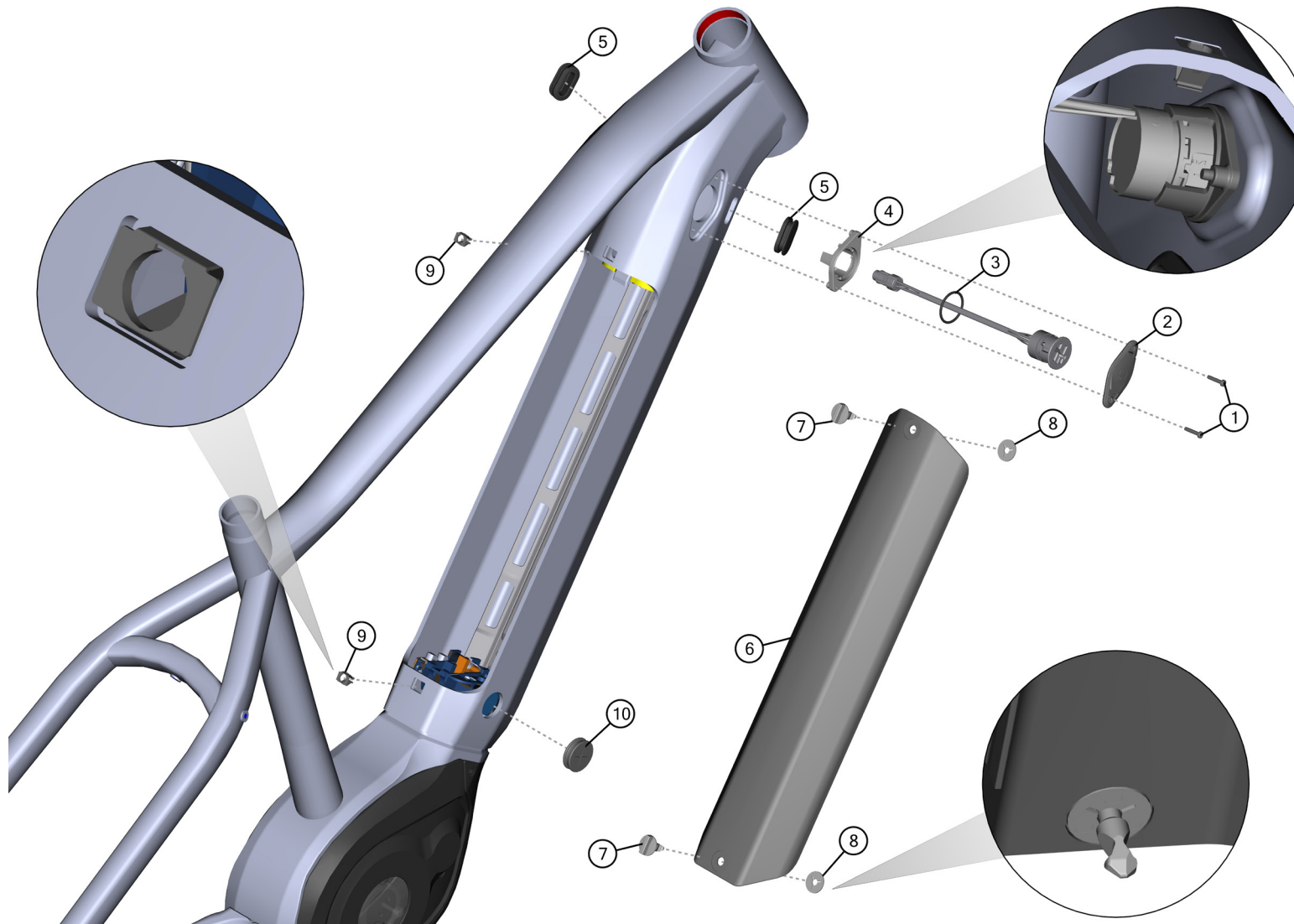
version: 01

page 1 / 12

# ÜBERSICHTSZEICHNUNG

## ASSEMBLY DRAWING main frame

# GHOST



**Hinweis:** Bei den Schrauben muss mittelfeste Gewindesicherung verwendet werden. Rote Flächen müssen gefettet werden.

**Note:** use medium strength screw lock for screw threads. red surfaces has to be greased.



➤ medium strength screwlock

# ÜBERSICHTSZEICHNUNG

## ASSEMBLY DRAWING main frame

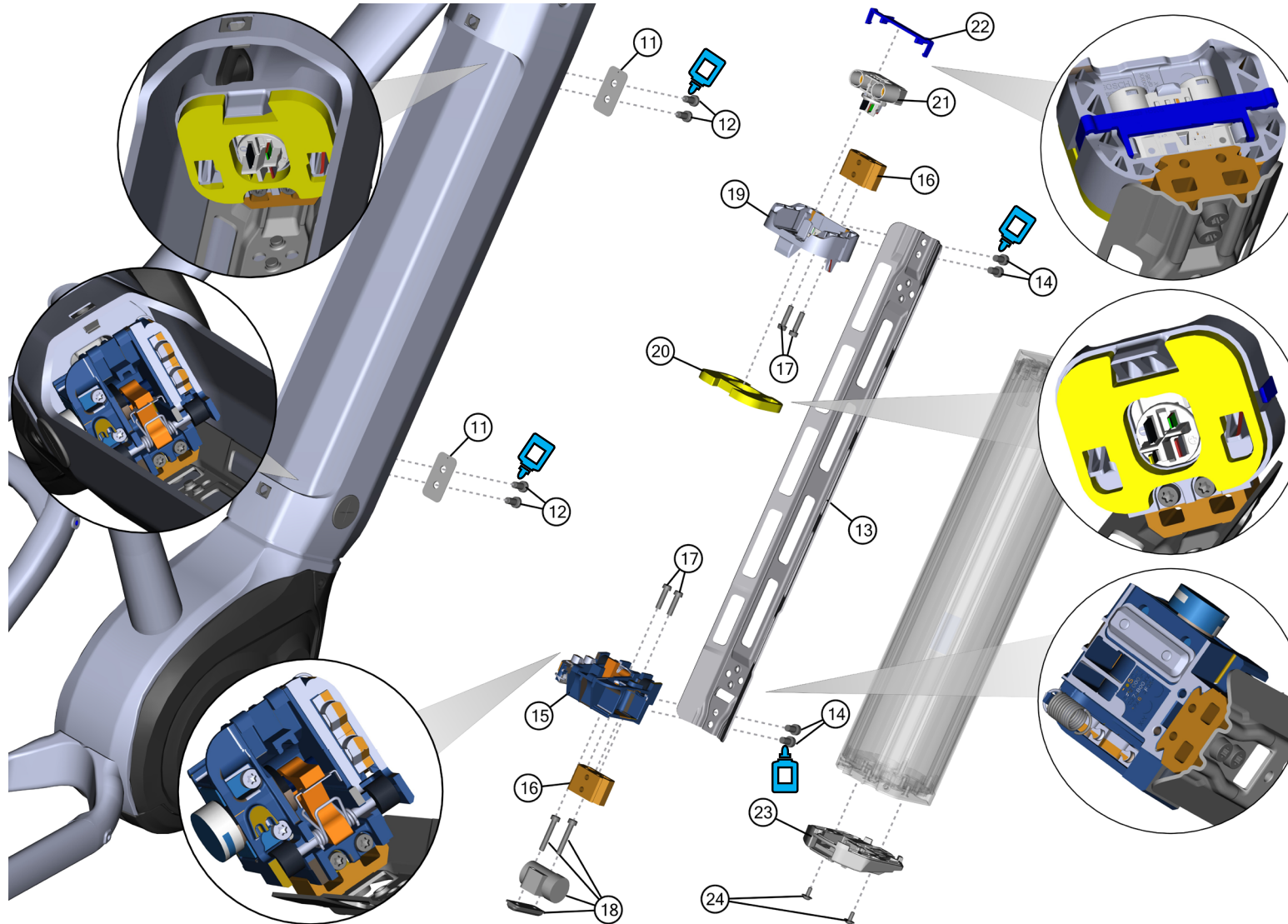
# GHOST

BOM-ID	Description	Specification	Torque	Item no.	QTY
1	Lens head screw	TX10 - M3 x 16 mm	1 Nm	FRSC0071 / 09103029	2
2	Charge port cover			COV0016 / 53100913	1
3	O-ring charge port			ELOT0007 / 02009052	1
4	Charge port frame			FROT0212 / 53100999	1
5	Cable Routing Rubber			FROT0054 / W4094131	2
6	Battery cover			FROT0055 / W4094132	1
7	Locking pin with handle			FROT0048 / 57300425	2
8	Holderplate			FROT0047 / 57300424	2
9	Clip			FROT0046 / 57300423	2
10	Rubber ring			FROT0050 / W4094127	1

# ÜBERSICHTSZEICHNUNG


## ASSEMBLY DRAWING battery mount

# GHOST



**Hinweis:** Bei den Schrauben muss mittelfeste Gewindesicherung verwendet werden. Rote Flächen müssen gefettet werden.

**Note:** use medium strength screw lock for screw threads. red surfaces has to be greased.

 medium strength screwlock

# ÜBERSICHTSZEICHNUNG

## ASSEMBLY DRAWING battery mount

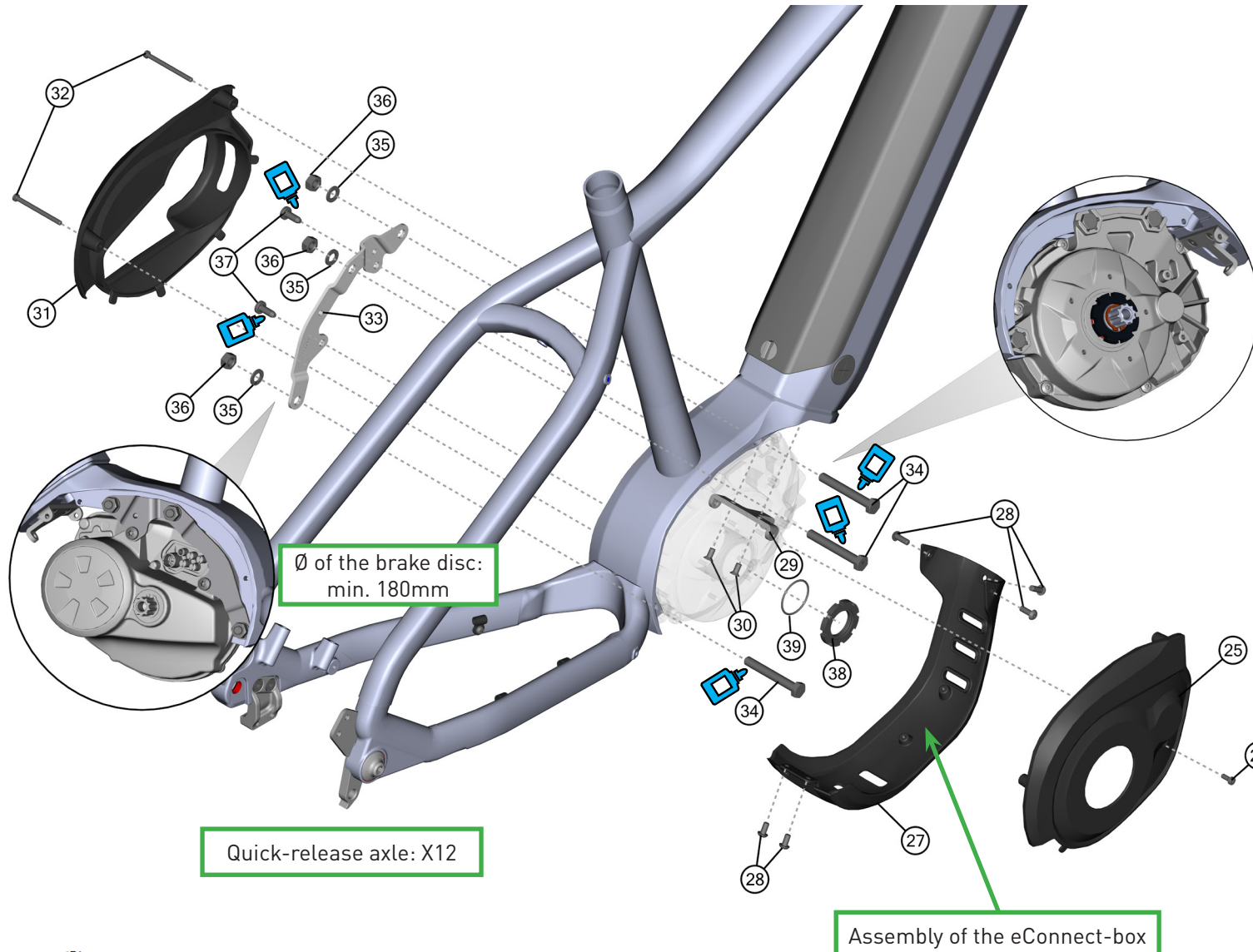
# GHOST

BOM-ID	Description	Specification	Torque	Item no.	QTY
11	Plate for fixing			FR0T0240	2
12	Hexagon socket screw (flat head)	IS3 - M 5 x 10 mm	5 Nm	FRSC0146 / 09103066	4
13	Guide rail			02006274	1
14	Screws for guide rail	TX25 - M5 x 9 mm	5 Nm	FRSC0122 / 02006252	4
15	Locking assembly			L00006 / 02006238	1
16	Framebase			02006275	2
17	Screw for framebase	T20 - M4 x 16 mm	3 Nm	FRSC0121 / 02006251	4
18	Battery lock			94092058	1
19	Cradle			ELOT0003 / 02006239	1
20	Damper foil			ELOT0005 / 02006240	1
21	Battery adapter			ELOT0006 / 02006242	1
22	Clamp ring			ELOT0008 / 02006245	1
23	Screw-on plate			02006260	1
24	Screw f. screw-on plate	M3 x 7 mm	1 Nm	FRSC0123 / 02006237	2

# ÜBERSICHTSZEICHNUNG


## ASSEMBLY DRAWING drive mount

# GHOST



**Hinweis:** Bei den Schrauben muss mittelfeste Gewindesicherung verwendet werden. Rote Flächen müssen gefettet werden.

**Note:** use medium strength screw lock for screw threads. red surfaces has to be greased.

 medium strength screwlock



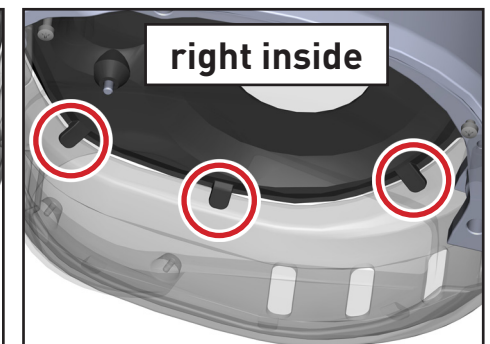
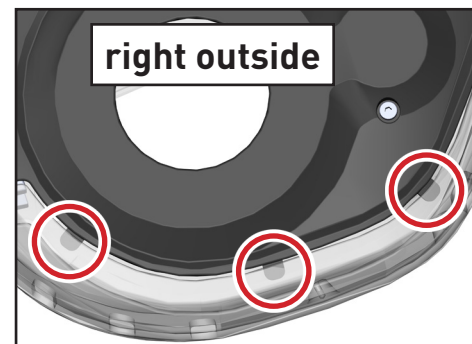
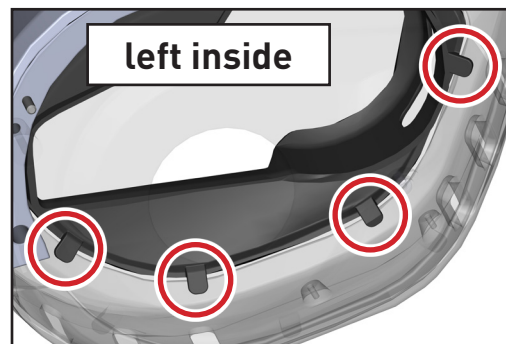
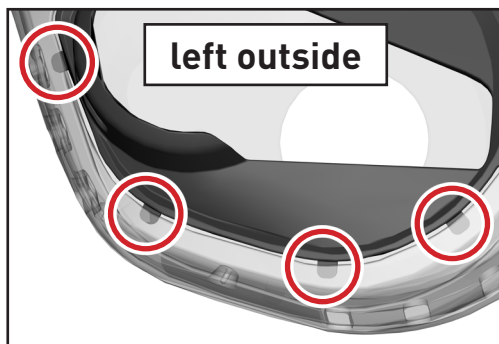
# ÜBERSICHTSZEICHNUNG

## ASSEMBLY DRAWING drive mount

# GHOST

BOM-ID	Description	Specification	Torque	Item no.	QTY
25	Motor cover right side			FROT0091 / 10010526	1
26	Screw (thread forming tap)	TX20 - M4 x 12 mm	3 Nm	FRSC0073 / 09105147	1
27	Motor cover low			FROT0093 / 10010527	1
28	Lens head screw	IS3 - M5 x 8 mm	6 Nm	SM1188 / 09105106	5
29	Cover mount lower side			FROT0094 / 10010528	1
30	Counter sunk screw	IS3 - M5 x 10 mm	6 Nm	FRSC0068 / 09103043	2
31	Motor cover left side			FROT0092 / 10010525	1
32	Screw (thread forming tap)	M4 x 53,5 mm	3 Nm	FRSC0069 / 02006136	2
33	Mounting Plate			02006257	1
34	Screw	M8 x 60	28 - 30 Nm	FRSC0095 / 02006112	3
35	Washer			FRWS0040 / 02006115	3
36	Nut	M8		FRNT0010 / 02006113	3
37	Screw	M6 x 16	9 - 11 Nm	FRSC0096 / 02006114	2
38	Lockring for BDU3XX			FROT0178 / 02006194	1
39	O-Ring			FROT0179 / 02006195	1

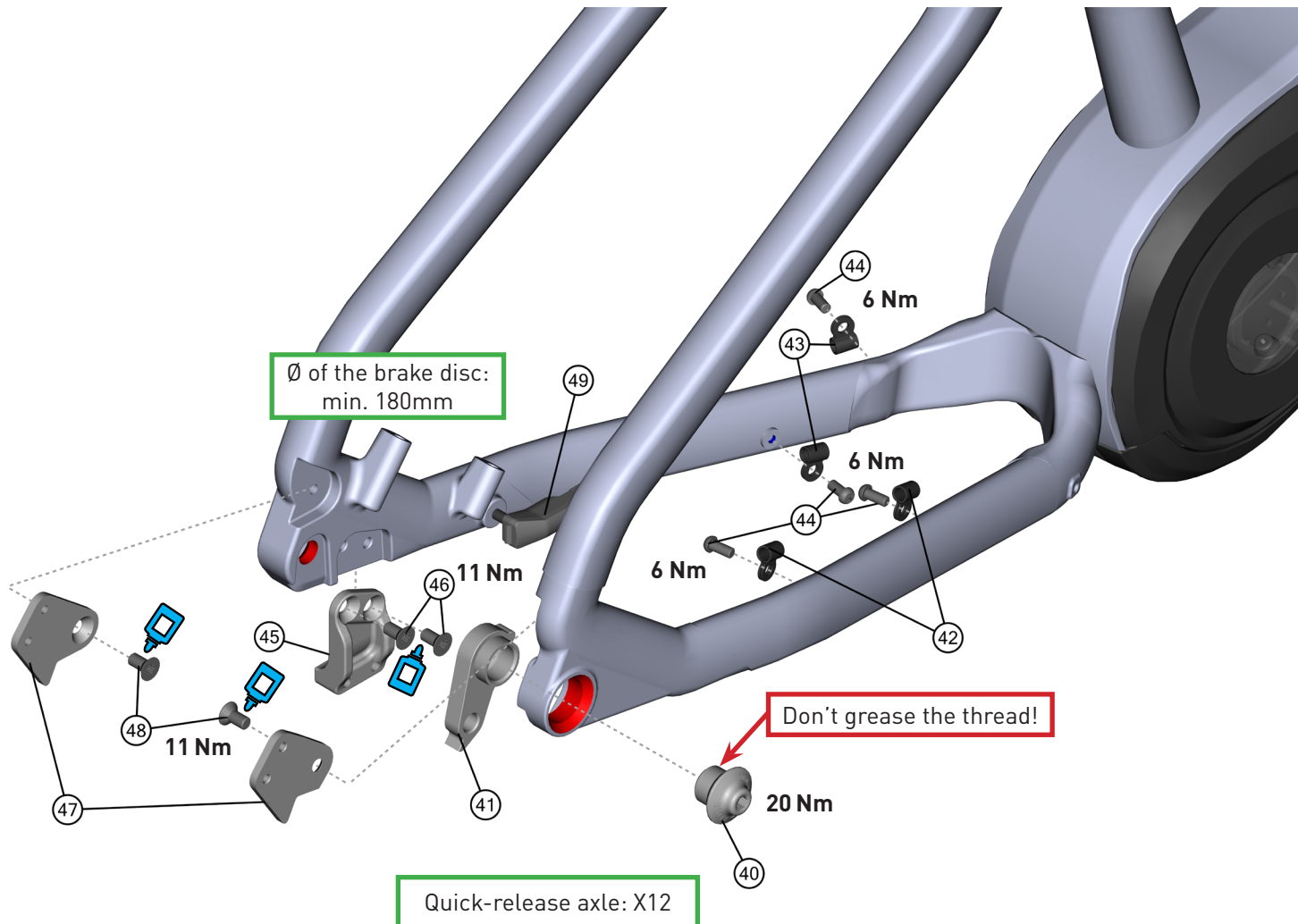
➤ The noses of the Motor cover right side (FROT0091) and Motor cover left side (FROT0092) must be hung low on the inside of the Motor cover low (FROT0093)!



# ÜBERSICHTSZEICHNUNG


## ASSEMBLY DRAWING rear frame

# GHOST



**Hinweis:** Bei den Schrauben muss mittelfeste Gewindesicherung verwendet werden. Rote Flächen müssen gefettet werden.

**Note:** use medium strength screw lock for screw threads. red surfaces has to be greased.

 medium strength screwlock



# ÜBERSICHTSZEICHNUNG

## ASSEMBLY DRAWING rear frame

# GHOST

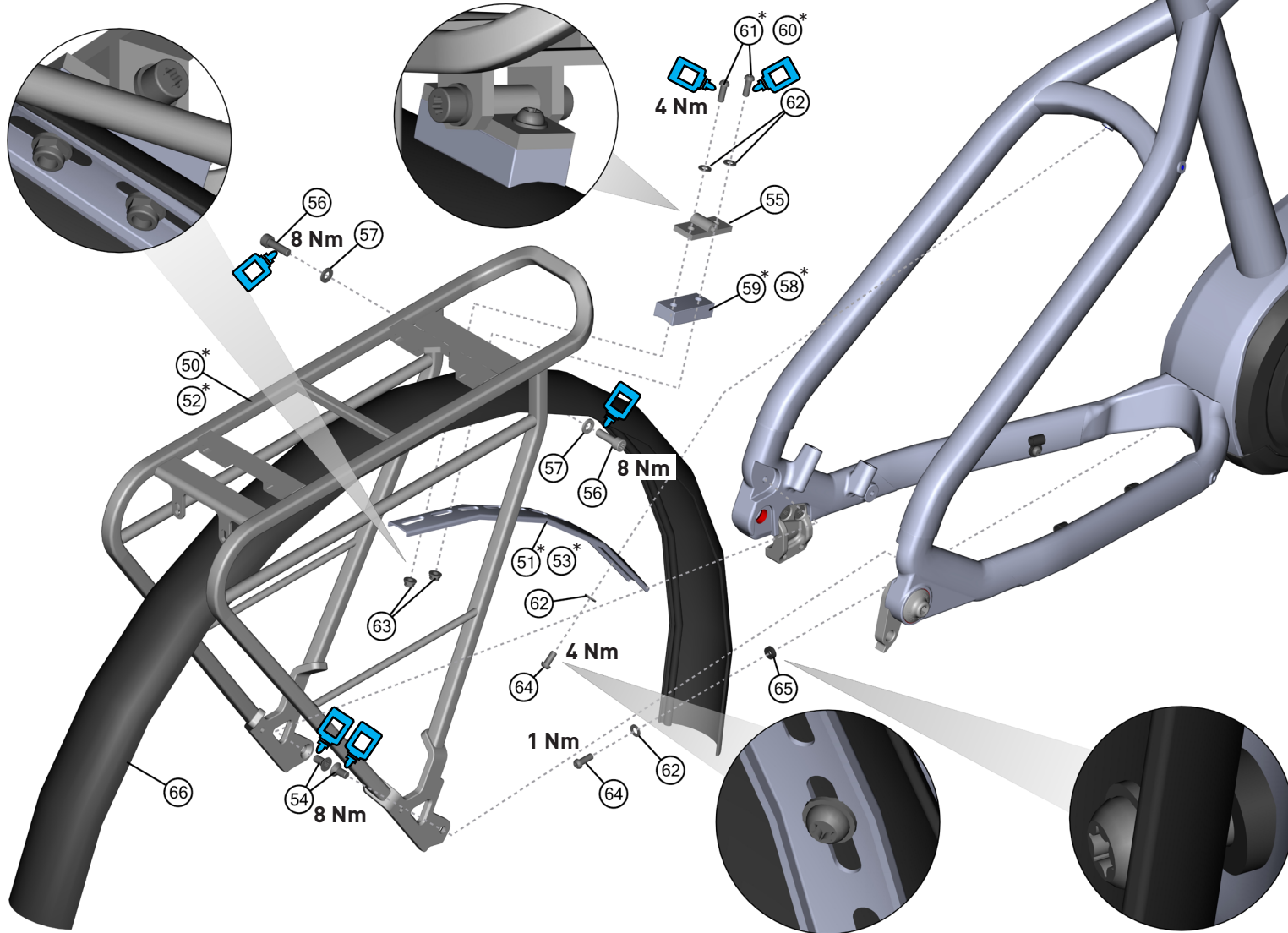
BOM-ID	Description	Specification	Torque	Item no.	QTY
40	Hanger nut		20 Nm	FRNT0008/10010531	1
41	Hanger			FRHG0025/10010530	1
42	Cable guide for 1 cable			SM0002 / W4094110	2
43	Cable guide for 2 cable			SM0263 / W1580200	2
44	Lens head screw	TX25 - M5 x 12 mm	6 Nm	SM0919 / 09103281	4
45	Kickstand Adaptor			S M K S 0 0 0 3 / W9600044	1
46	Counter sunk screw	TX30 - M6 x 12 mm	11 Nm	FRSC0181/09103079	2
47	connection parts for standard after market carrier and/or fender (set right side + left side) ➤ <b>only for E-TERU ESSENTIAL</b>			SMF0023 / 10010563	1
48	Counter sunk screw for connection parts ➤ <b>only for E-TERU ESSENTIAL</b>	TX30 - M6 x 12 mm	11 Nm	FRSC0064/09105115	2
49	Chainstay Adapter for Speedsensor			02009045	1

# ÜBERSICHTSZEICHNUNG

ASSEMBLY DRAWING

E-TERU ESSENTIAL EQ carrier & fender

# GHOST



**Hinweis:** Bei den Schrauben muss mittelfeste Gewindesicherung verwendet werden. Rote Flächen müssen gefettet werden.

**Note:** use medium strength screw lock for screw threads. red surfaces has to be greased.



➤ medium strength screwlock

# ÜBERSICHTSZEICHNUNG

## ASSEMBLY DRAWING E-TERU ESSENTIAL EQ carrier & fender

# GHOST

BOM-ID	Description	Specification	Torque	Item no.	QTY
50*	Carrier <b>(depending which is installed)</b>			CA0017 / 77002140	1
51*	Carrier rail <b>(depending which is installed)</b>			SMF0025 / 77002141	1
52*	Carrier <b>(depending which is installed)</b>			CA0020 / 77002157	1
53*	Carrier rail <b>(depending which is installed)</b>			CA0021 / 77002158	1
54	Counter sunk screw	TX30 - M6 x 14 mm (8.8)	8 Nm	FRSC0135/09105115	2
55	Plate for carrier			SMF0024 / 77002152	1
56	Hexagon socket screw (flat head)	IS4 - M6 x 14 mm (8.8)	8 Nm	SM1693 / 09105185	2
57	Washer	ø 6,4 mm		SM1243 / 00125071	2
58*	Carrier spacer 5mm <b>(depending which is installed)</b>			FROT0228/96090081	1
59*	Carrier spacer 10mm <b>(depending which is installed)</b>			FROT0211/77002151	1
60*	Lens head screw for 5mm carrier spacer <b>(depending which is installed)</b>	IS3 - M5 x 20 mm (10.9)	4 Nm	SM1192 / 09105002	2
61*	Lens head screw for 10mm carrier spacer <b>(depending which is installed)</b>	IS3 - M5 x 25 mm (10.9)	4 Nm	SM1193 / 09105003	2
62	Washer	ø 5,3 mm		SM1242 / 00125400	4
63	Self locking nut with flange	M5		FRSC0112/01587001	2
64	Lens head screw	TX25 - M5 x 14 mm (8.8)	1 & 4 Nm see drawing	FRSC0065	2
65	Plastic spacer	ø 5,2 x 10 x 3 mm		SM1142 / W9350000	1
66	Rear fender			FER0028 / 11011313	1

# ÜBERSICHTSZEICHNUNG

## ASSEMBLY DRAWING

# GHOST

FACT SHEET:	
SHOCK LENGTH:	-----
SHOCK HARDWARE TOP:	-----
SHOCK HARDWARE BOTTOM:	-----
HEADSET TOP:	ZS 44
HEADSET BOTTOM:	ZS 56
SEATPOST DIAMETER:	31,6 MM
CLAMP INNER DIAMETER:	34,9 MM
BOTTOM BRACKET:	-----
KICKSTAND:	KSA18 (Adapter required)
ISCG STANDARD:	-----
CARRIER MOUNT:	YES (Adapter required)
FENDER COMPATIBLE:	YES

DROPPER SEATPOST READY:	NO
WATERBOTTLE MOUNT:	1 x 0,75 L
MAXIMUM PERMISSIBLE TOTAL WEIGHT:	150 KG
MAXIMUM TIRE SIZE:	27,5"/29" x 2,60"
WHEEL SIZE:	MTB Size S: 27,5" MTB Size M / L / XL: 29" EQ & EQ MID: 27,5"
QUICK RELEASE LENGTH:	169 MM
OVER-LOCKNUT DIMENSION (O.L.D.):	148 MM
FD CLAMP SIZE:	-----
FD TYPE:	-----
ENGINE:	BOSCH PERFORMANCE LINE
BATTERY:	BOSCH POWERTUBE 500 WH
DISPLAY:	BOSCH LED REMOTE